

Transformers



SCS Series

- Current Sense SMT
- Operating Temperature: -40°C ~ 125°C
- Frequency: 50 ~ 1 MHz
- EE Core Sizes: 4.4, 4.6 & 8.3 mm



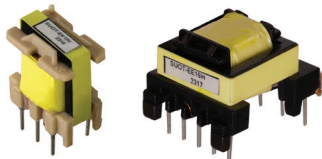
SPoE/SPoDL Series

- Power Over Ethernet SMT
- Operating Temperature: -40°C ~ 125°C
- Power Range: 3 ~ 27 W
- SMT Platform: EP7, EP10 & EP13



SLLC Series

- High Frequency Resonant
- Operating Temperature: -40°C ~ 125°C
- Dielectric Strength: 4 kV AC
- Horizontal PCB THT Mounting Platforms: ETD34, ETD39 & ETD44



SUOT Series

- Universal Off-line
- Operating Temperature: -40°C ~ 125°C
- Dielectric Strength: 4 kV AC
- Horizontal & Vertical PCB THT Mouning Platforms: EE13 & EE16



SUOST Series

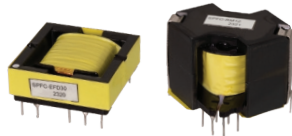
- Universal Line SMD
- Operating Temperature: -40°C ~ 125°C
- Dielectric Strength: 4 kV AC
- Horizontal SMD Mounting Platform: EE5, EE8 & EE16



14A Series

- Power: 2.5 ~ 56 VA
- Dielectric Strength: 4000 Vrms Hipot
- Dual Primaries: 115/230 V ~ 50/60 Hz
- Dual Secondaries: Series or Parallel

Chokes



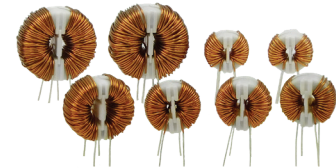
SPFC Series

- Power Factor Correction
- Operating Temperature: -40°C ~ 125°C
- Dielectric Strength: 1.5 kV AC
- Horizontal & Vertical PCB THT Mounting Platforms: EE, EER, EFD, PQ & RM



SPDL Series

- SMD Common Mode
- Operating Temperature: -40°C ~ 125°C
- Impedance: 40 ~ 2500 ohms @ 1100 MHz
- Current Rating: 0.9 ~ 5 A



LPTC-V Series

- High ISO Common Mode
- Operating Temperature: -55°C ~ 125°C
- Dielectric Strength: 2 kVrms
- Inductance: 0.51 ~ 25.5 mH



HCTC Series

- High Current Common Mode
- Operating Temperature: -55°C ~ 105°C
- DC Rated Current: 1.7 ~ 20.0 A
- Inductance: 1 ~ 50 mH



SNCMC Series

- High Temperature Common Mode
- Operating Temperature: -25°C ~ 130°C
- Dielectric Strength: 1 kV AC
- Vertical Mounting Platform



CH Series

- Chassis Mount Only
- DC Current: 1.0 ~ 200 ADC
- Inductance: 0.12 ~ 100 mHY
- Insulation System: Class B Insulation, 130°C

Inductors



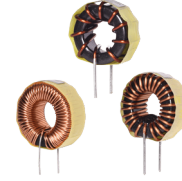
HCTI Series

- High Current Filter
- Operating Temperature: -55°C ~ 105°C
- DC Rated Current: 2.4 ~ 20.0 A
- Inductance: 10 ~ 1000 μ H @ 0 ADC



HTTI Series

- High Temperature Filter
- Operating Temperature: -55°C ~ 200°C
- DC Rated Current: 1.6 ~ 9.9 A
- Inductance: 10 ~ 1000 μ H



HCLC Series

- Low Core Loss Filter
- Operating Temperature: -40°C ~ 125°C
- Dielectric Strength: 4 kV AC
- Inductance: 10 ~ 1000 μ H



DRC / DRCV Series

- Core Radial
- Operating Temperature: -40°C ~ 125°C
- Dielectric Strength: 4 kV AC
- Horizontal & Vertical PCB THT Mounting Platforms: EE13 & EE16



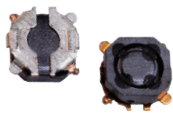
SFAPI Series

- Drum Core Axial
- Operating Temperature: -40°C ~ 125°C
- High Current Choke
- Wide Inductance Range



FCB Series

- Ferrite Bead Chip
- Operating Temperature: -55°C ~ 125°C
- Impedance: 30 ~ 1000 ohms
- Low Profile & Compact Size



F1A1 Series

- Shielded SMD Power
- Operating Temperature: -40°C ~ 105°C
- Low Profile & Compact Size
- Inductance: 1.2 ~ 47 μ H



F1C1 Series

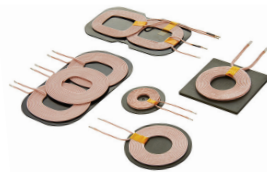
- Molded SMD Power
- Operating Temperature: -55°C ~ 125°C
- Low Loss Realized with Low DCR
- Inductance: 0.24 ~ 0.47 μ H



F1A2 Series

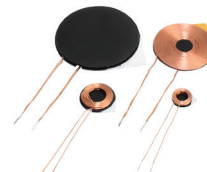
- Shielded SMD Power
- Operating Temperature: -40°C ~ 125°C (Including Coil Self-temperature Rise)
- Low Profile & High Current
- Inductance: 1.0 ~ 47 μ H

Wireless Charging Coils



WTSC / WTM / WTSQ Series

- Transmitter
- Pin Cooling Technology
- Two Core Shapes: Circular (C) or Square / Rectangular (Q)
- Customizable Size & Shapes



WRSC / WRSR Series

- Receiver
- Operating Temperature: -25°C ~ 105°C
- I Sat Range: 1.0 ~ 3.0 A
- Impedance: 11 ~ 16.7 ohms @ 125 kHz