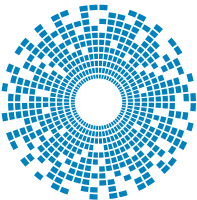


Modular Plugs Selection Guide



stewart
CONNECTOR

a bel group

belfuse.com/stewart-connector

Modular Plug Guide

CAT6A Modular Plugs

	Part Number	Cable Crimp Style	Strain Relief Boot	Optional Strain Relief Boot	Cable Diameter	Conductor Diameter	Low to Mid Volume	Mid to High Volume				
							Installer Hand Tool Kit	Production Die Set		Production Tools (Select one)		
								used with	Hand Crimp Tool	or	Pneumatic Crimp Tool	
UTP	SS-39100-030	Standard	Not Included	39100-874 (Slimline)	0.235 Max [5.97 mm Max]	0.033 – 0.038" [0.838 – 0.965 mm]	2990003-01	2905014-01	used with	2940231-01	or	2940252-01
	SS-39100-028	Standard	Anti-Snag Slimline Included	-	0.235" Plug / 0.300" Boot Max [5.97 mm Plug / 7.62 mm Boot Max]	0.033 – 0.038" [0.838 – 0.965 mm]	2990003-01	2905014-01	used with	2940231-01	or	2940252-01
	SS-39100-031	Standard	Anti-Snag Slimline Included	-	0.235" Plug / 0.300" Boot Max [5.97 mm Plug / 7.62 mm Boot Max]	0.037 – 0.042" [0.940 – 1.067 mm]	2990003-01	2905014-01	used with	2940231-01	or	2940252-01
FTP	SS-39200-044	Standard	Not Included	39100-888 (Slimline)	0.210" Max [5.33 mm Max]	0.025 – 0.030" [0.635 – 0.762 mm]	2990003-01	2905014-01	used with	2940231-01	or	2940252-01
	SS-39200-055	Standard	Anti-Snag Slimline Included	-	0.210" Max [5.33 mm Max]	0.028 – 0.033" [0.711 – 0.838 mm]	2990003-01	2905014-01	used with	2940231-01	or	2940252-01
	SS-39200-020	Rear	Anti-Snag Slimline Included	-	0.220 ~ 0.240" [5.59 – 6.10 mm]	0.037 – 0.042" [0.940 – 1.067 mm]	N/A	2980070-01	Hand Crimp tool included in kit / Pneumatic crimp tool not available			
	SS-39200-021	Rear	Not Included	39200-872 (Slimline)	0.220 ~ 0.240" [5.59 – 6.10 mm]	0.037 – 0.042" [0.940 – 1.067 mm]	N/A	2980070-01				
	SS-39200-022	Rear	Anti-Snag Slimline Included	-	0.230 ~ 0.250" [5.84 – 6.35 mm]	0.037 – 0.042" [0.940 – 1.067 mm]	N/A	2980075-01				
	SS-39200-023	Rear	Not Included	39200-872 (Slimline)	0.230 ~ 0.250" [5.84 – 6.35 mm]	0.037 – 0.042" [0.940 – 1.067 mm]	N/A	2980075-01				
	SS-39200-043	Rear	Anti-Snag Slimline Included	-	0.232 ~ 0.248" [5.90 – 6.30 mm]	0.042 – 0.048" [1.067 – 1.220 mm]	N/A	2980075-01				
	SS-39200-024	Rear	Anti-Snag Slimline Included	-	0.230 ~ 0.250" [5.84 – 6.35 mm]	0.033 – 0.038" [0.838 – 0.965 mm]	N/A	2980075-01				
	SS-39200-026	Standard	Not Included	39100-874 (Slimline)	0.235" Max [5.97 mm Max]	0.033 – 0.038" [0.838 – 0.965 mm]	2990003-01	2905014-01	used with	2940231-01	or	2940252-01
	SS-39200-035	Standard	Anti-Snag Slimline Included	-	0.235" Max [5.97 mm Max]	0.033 – 0.038" [0.838 – 0.965 mm]	2990003-01	2905014-01	used with	2940231-01	or	2940252-01
	SS-39200-036	Standard	Anti-Snag Slimline Included	-	0.235" Max [5.97 mm Max]	0.037 – 0.042" [0.940 – 1.067 mm]	2990003-01	2905014-01	used with	2940231-01	or	2940252-01
	SS-39200-037	Standard	Not Included	39100-874 (Slimline)	0.235" Max [5.97 mm Max]	0.037 – 0.042" [0.940 – 1.067 mm]	2990003-01	2905014-01	used with	2940231-01	or	2940252-01
	SS-39200-053	Rear	Anti-Snag Slimline Included	-	0.270 ~ 0.295" [6.86 – 7.49 mm]	0.033 – 0.038" [0.838 – 0.965 mm]	N/A	2980078-01	Hand Crimp tool included in kit / Pneumatic crimp tool not available			
	SS-39200-025	Rear	Not Included	39200-883 (Slimline)	0.270 ~ 0.295" [6.86 – 7.49 mm]	0.037 – 0.042" [0.940 – 1.067 mm]	N/A	2980078-01				
	SS-39200-034	Rear	Anti-Snag Slimline Included	-	0.270 ~ 0.295" [6.86 – 7.49 mm]	0.037 – 0.042" [0.940 – 1.067 mm]	N/A	2980078-01				
SS-39200-030	Rear	Anti-Snag Slimline Included	-	0.270 ~ 0.295" [6.86 – 7.49 mm]	0.042 – 0.048" [1.067 – 1.220 mm]	N/A	2980078-01					

CAT6A Modular Plugs (Continued)

	Part Number	Cable Crimp Style	Strain Relief Boot	Optional Strain Relief Boot	Cable Diameter	Conductor Diameter	Low to Mid Volume	Mid to High Volume			
							Installer Hand Tool Kit	Production Die Set	Production Tools (Select one)		
									Hand Crimp Tool	or	Pneumatic Crimp Tool
FTP	SS-39200-079	Rear	Slimline Included	-	0.230 ~ 0.250" [5.84 ~ 6.35 mm]	0.033 ~ 0.038" [0.838 ~ 0.965 mm]	N/A	2980075-01	Hand Crimp tool included in kit / Pneumatic crimp tool not available		
	SS-39200-081	Rear	Slimline Included	-	0.230 ~ .250" [5.84 ~ 6.35 mm]	0.037 ~ 0.042" [0.940 ~ 1.067 mm]	N/A	2980075-01			
	SS-39200-083	Rear	Slimline Included	-	0.230 ~ 0.250" [5.84 ~ 6.35 mm]	0.042 ~ 0.048" [1.067 ~ 1.220 mm]	N/A	2980075-01			
	SS-39200-085	Rear	Slimline Included	-	0.270 ~ 0.300" [6.86 ~ 7.62 mm]	0.033 ~ 0.038" [0.838 ~ 0.965 mm]	N/A	2980078-01			
	SS-39200-087	Rear	Slimline Included	-	0.270 ~ 0.300" [6.86 ~ 7.62 mm]	0.037 ~ 0.042" [0.940 ~ 1.067 mm]	N/A	2980078-01			
	SS-39200-089	Rear	Slimline Included	-	0.270 ~ 0.300" [6.86 ~ 7.62 mm]	0.042 ~ 0.048" [1.067 ~ 1.220 mm]	N/A	2980078-01			
	SS-39200-090	Rear	Slimline Included	-	0.270 ~ 0.300" [6.86 ~ 7.62 mm]	0.056 ~ 0.062" [1.422 ~ 1.575 mm]	N/A	2980078-01			
	SS-39200-092	Rear	Slimline Included	-	0.300 ~ 0.315" [7.62 ~ 8.00 mm]	0.042 ~ 0.048" [1.067 ~ 1.220 mm]	N/A	2980078-01			
	SS-39200-093	Rear	Slimline Included	-	0.315 ~ 0.330" [8.00 ~ 8.38 mm]	0.056 ~ 0.062" [1.422 ~ 1.575 mm]	N/A	2980081-01			
	SS-39200-107	Rear	Slimline Included	-	0.250 ~ 0.270" [6.35 ~ 6.86 mm]	0.033 ~ 0.038" [0.838 ~ 0.965 mm]	N/A	2980078-01			
	SS-39200-109	Rear	Slimline Included	-	0.250 ~ 0.270" [6.35 ~ 6.86 mm]"	0.037 ~ 0.042" [0.940 ~ 1.067 mm]	N/A	2980078-01			
	SS-39200-111	Rear	Slimline Included	-	0.250 ~ 0.270" [6.35 ~ 6.86 mm]	0.042 ~ 0.048" [1.067 ~ 1.220 mm]	N/A	2980078-01			
	SS-39200-113	Rear	Slimline Included	-	0.270 ~ 0.295" [6.86 ~ 7.49 mm]	0.048 ~ 0.056" [1.220 ~ 1.422 mm]	N/A	2980078-01			
	SS-39200-027	Rear	Anti-Snag Slimline Included	-	0.270 ~ 0.295" [6.86 ~ 7.49 mm]	0.042 ~ 0.048" [1.067 ~ 1.220 mm]	N/A	2980078-01			
	SS-39200-064	Rear	Slimline Included	-	0.270 ~ 0.315" [6.86 ~ 8.00 mm]	0.056 ~ 0.062" [1.422 ~ 1.575 mm]	N/A	2980081-01			

Modular Plug Guide

CAT6 Modular Plugs

	Part Number	Cable Crimp Style	Strain Relief Boot	Optional Strain Relief Boot	Cable Diameter	Conductor Diameter	Installer Hand Tool Kit	Production Die Set	Production Tools (Select one)			
									Hand Crimp Tool	or	Pneumatic Crimp Tool	
UTP	SS-39100-039	Standard	Anti-Snag Slimline Included	-	0.160" Max [4.06 mm Max]	0.025 ~ 0.030" [0.635 ~ 0.762 mm]	2990003-01	2905014-01	used with	2940231-01	or	2940252-01
	SS-39100-049	Standard	Not Included	39100-888 (Slimline)	0.207" Max [5.26 mm Max]	0.028 ~ 0.033" [0.711 ~ 0.838 mm]	2990003-01	2905014-01	used with	2940231-01	or	2940252-01
	SS-39100-021	Standard	Not Included	450-024	0.235" Max [5.97 mm Max]	0.037 ~ 0.042" [0.940 ~ 1.067 mm]	2990003-01	2905014-01	used with	2940231-01	or	2940252-01
	SS-39100-029	Standard	Not Included	39100-874 (Slimline)	0.235" Max [5.97 mm Max]	0.037 ~ 0.042" [0.940 ~ 1.067 mm]	2990003-01	2905014-01	used with	2940231-01	or	2940252-01
FTP	SS-39200-012	Rear	Not Included	39200-872 (Slimline)	0.220 ~ 0.240" [5.59 ~ 6.10 mm]	0.037 ~ .042" [0.940 mm ~ 1.067 mm]	N/A	2980070-01	Hand Crimp tool included in kit / Pneumatic crimp tool not available			
	SS-39200-011	Rear	Anti-Snag Slimline Included	-	0.232 ~ 0.248" [5.90 ~ 6.30 mm]	0.037 ~ 0.042" [0.940 ~ 1.067 mm]	N/A	2980075-01	Hand Crimp tool included in kit / Pneumatic crimp tool not available			
	SS-39200-036	Standard	Anti-Snag Slimline Included	-	0.235" Max [5.97 mm Max]	0.037 ~ 0.042" [0.940 ~ 1.067 mm]	2990003-01	2905014-01	used with	2940231-01	or	2940252-01
	SS-39200-037	Standard	Not Included	39100-874 (Slimline)	0.235" Max [5.97 mm Max]	0.037 ~ 0.042" [0.940 ~ 1.067 mm]	2990003-01	2905014-01	used with	2940231-01	or	2940252-01
	SS-39200-010	Rear	Not Included	-	0.240 ~ 0.260" [6.10 ~ 6.60 mm]	0.037 ~ 0.042" [0.940 ~ 1.067 mm]	N/A	2980075-01	Hand Crimp tool included in kit / Pneumatic crimp tool not available			
	SS-39200-019	Rear	Not Included	39200-883 (Slimline)	0.270 ~ 0.295" [6.86 ~ 7.49 mm]	0.037 ~ 0.042" [0.940 ~ 1.067 mm]	N/A	2980078-01	Hand Crimp tool included in kit / Pneumatic crimp tool not available			

CAT5E Modular Plugs

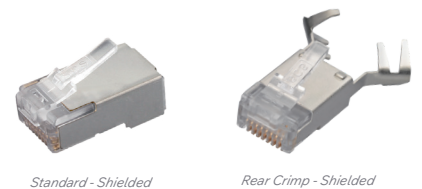
	Part Number	Strain Relief Boot	Optional Strain Relief Boot	Cable Diameter	Conductor Diameter	Installer Hand Tool Kit	Production Die Set	Production Tools (Select one)			
								Hand Crimp Tool	or	Pneumatic Crimp Tool	
UTP	SS-37000-007	Not Included	39100-878 (Slimline)	0.235" Max [5.97 mm Max]	0.037 ~ 0.042" [0.940 ~ 1.067 mm]	2990003-01	2905014-01	used with	2940231-01	or	2940252-01
	SS-39100-048	Not Included	39100-874 (Slimline)	0.235" Max [5.97 mm Max]	0.037 ~ 0.042" [0.940 ~ 1.067 mm]	2990003-01	2905014-01	used with	2940231-01	or	2940252-01
	SS-37000-009	Not Included	39100-878 (Slimline)	0.235" Max [5.97 mm Max]	0.042 ~ 0.048" [1.067 ~ 1.220 mm]	2990003-01	2905014-01	used with	2940231-01	or	2940252-01
FTP	SS-39200-054	Not Included	39100-874 (Slimline)	0.235" Max [5.97 mm Max]	0.037 ~ 0.042" [0.940 ~ 1.067 mm]	2990003-01	2905014-01	used with	2940231-01	or	2940252-01
	SS-37200-028	Not Included	450-024	0.235" Max [5.97 mm Max]	0.037 ~ 0.042" [0.940 mm ~ 1.067 mm]	2990003-01	2905014-01	used with	2940231-01	or	2940252-01

Telecom Modular Plugs

Part Number	Contacts/ Positions	Performance	Strain Relief Boot	Optional Strain Relief Boot	Cable Diameter	Conductor Diameter	Low to Mid Volume	Mid to High Volume				
							Installer Hand Tool Kit	Production Die Set		Production Tools (Select one)		
								Hand Crimp Tool	or	Pneumatic Crimp Tool		
940-SP-3044R	4/4	Cat3	Not Available	-	0.135" Max [3.43 mm Max]	0.032 ~ 0.037" [0.813 ~ 0.940 mm]	2990001-01	2905001-01	used with	2940231-01	or	2940252-01
940-SP-3046R	4/6	Cat3	Not Available	-	0.135" Max [3.43 mm Max]	0.032 ~ 0.037" [0.813 ~ 0.940 mm]	2990002-01	2905002-01	used with	2940231-01	or	2940252-01
940-SP-3066R	6/6	Cat3	Not Available	-	0.135" Max [3.43 mm Max]	0.032 ~ 0.037" [0.813 ~ 0.940 mm]	2990002-01	2905008-01	used with	2940231-01	or	2940252-01
940-SP-301010R	10/10	Cat3	Not Included	450-024	0.220" Max [5.59 mm Max]	0.032 ~ 0.037" [0.813 ~ 0.940 mm]	2990007-01	2905010-01	used with	2940231-01	or	2940252-01
940-SP-3088R-A133	8/8	Cat5	Not Included	450-024	0.220" Max [5.59 mm Max]	0.035 ~ 0.040" [0.890 ~ 1.020 mm]	2990003-01	2905005-01	used with	2940231-01	or	2940252-01

Shields

Stewart Connector offers shielded and unshielded plugs to meet any of your cabling termination needs. Our shielded plugs are available with traditional shield to cable ground termination configurations as well as with a crimp finger design which provides additional strain relief and improved grounding.



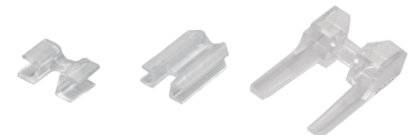
Load Bars

Stewart Connector offers load bars to increase the ease of use during assembly and provide reliable seating of the contacts into the conductors once terminated. Stewart's load bars are available in a large range of conductor sizes to accommodate a vast majority of cables in the market today.



Wire Aligner

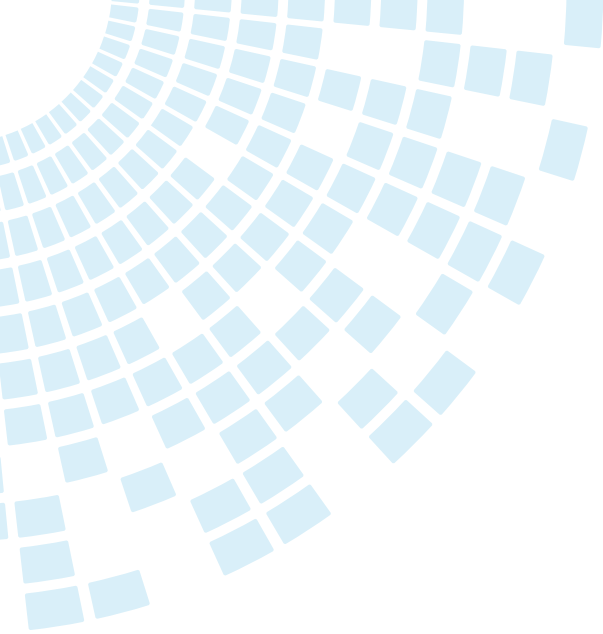
On some high performance designs, Stewart plug kits include wire aligners which help to consistently maintain the position of the conductors during assembly. This provides improved NEXT performance and helps to insure a repeatable plug assembly method with minimal cable assembly training or experience.



Strain Relief Boots

Stewart Connector also offers a variety of strain relief boots for our plugs. Many options are available to accommodate a wide range of cable diameters.

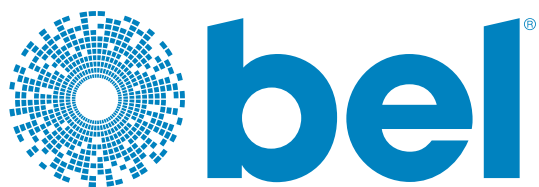
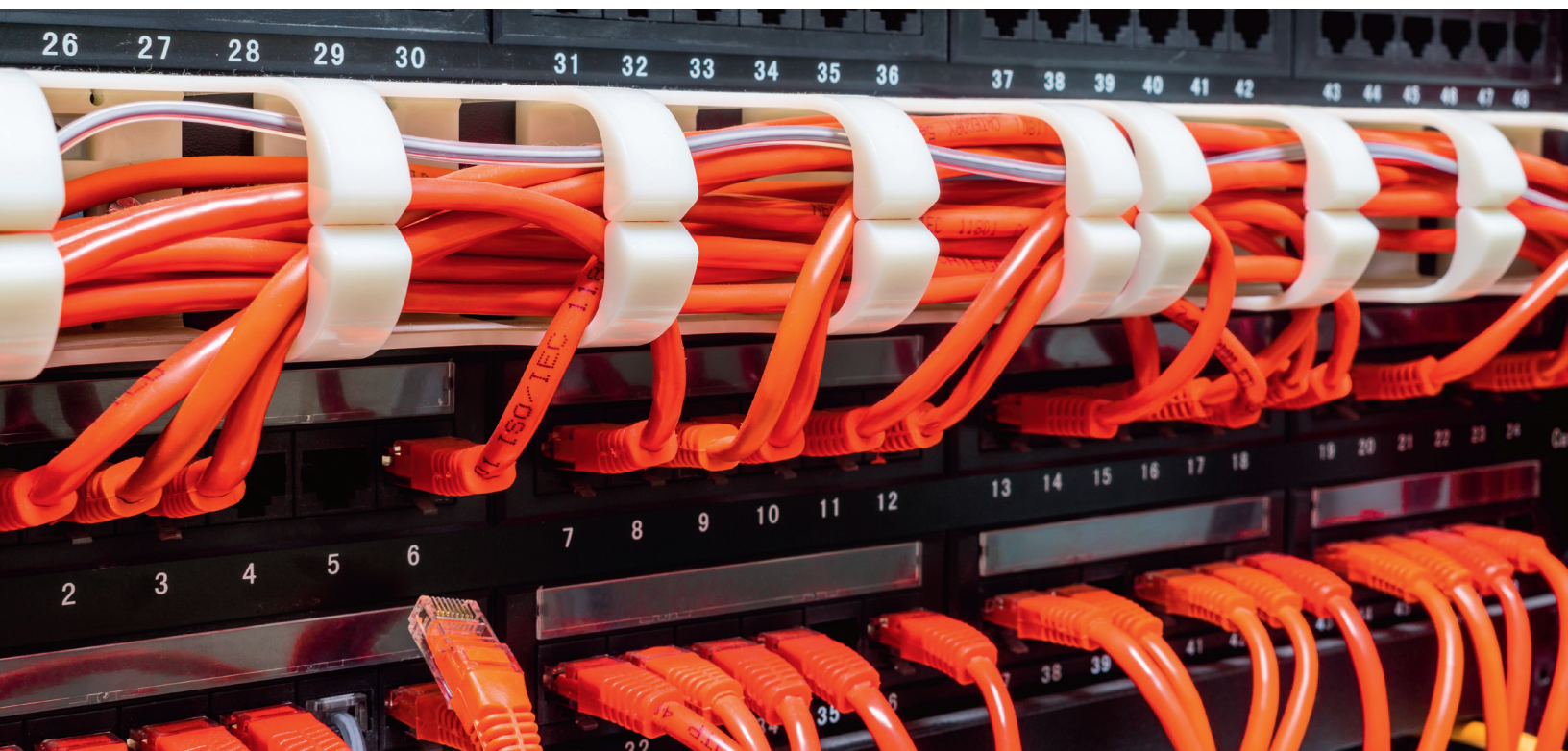




About Stewart Connector

Stewart Connector portfolio of products include one of the broadest ranges of Ethernet connectivity. Our interconnect products includes passive jacks, plugs and cable assemblies that provide connectivity in networking equipment. Modular plugs and cable assemblies are used within the structured cabling system, known as premise wiring.

All connector products are designed to meet current industry performance standards.



POWER | PROTECT | CONNECT

For more information, please contact us:

North America
11118 Susquehanna Trail South
Glen Rock, PA 17327-9199

+1 717.235.7512
techhelp@belf.com

belfuse.com/stewart-connector