



# ICM Ethernet Product Selection Guide for BROADCOM® – Mass Market PHYs



Disclaimer: Broadcom Limited owns the trademarked logo.



## 10/100/1000 Multi Port PHYs

IC Part No.	Bel /TRP Part No.	No. Ports	Port Config.	LEDs	Port Orientation	Profile	Application	Operating Temp.
BCM54685 BCM546880 BCM54680 BCM54684 BCM5482 BCM5482S BCM5404 BCM5401 BCM5411 BCM5421 BCM5421S BCM5464 BCM5700 BCM5701 BCM5702 BCM5703 BCM5703S BCM5704 BCM5705 BCM5705M BCM570X BCM5721 BCM 54981 BCM54980 BCM5488S BCM5751 BCM5751M	0826-1X2T-43-F	2	1x2	Yes	Tab Up	Standard	10/100/1000	0 to 70°C
	0826-1X2T-32-F	2	1x2	Yes	Tab Up	Standard	10/100/1000	-40 to 85°C
	0826-1X2T-GH-F	2	1x2	Yes	Tab Up	Standard	10/100/1000 PoE+	-40 to 85°C
	L886-1G2T-BF	2	1x2	Yes	Tab Up	Low Profile	10/100/1000	0 to 70°C
	1840638-1	2	1x2	Yes	Tab Up	Low Profile	10/100/1000	-40 to 85°C
	1840855-4	2	2x1	Yes	Stacked	Standard	10/100/1000	0 to 70°C
	0879-2C1R-V4	2	2x1	Yes	Stacked	Standard	10/100/1000	0 to 70°C
	0845-2R1T-E4	2	2x1	Yes	Stacked	Standard	10/100/1000	0 to 70°C
	0826-1X4T-43-F	4	1x4	Yes	Tab Up	Standard	10/100/1000	0 to 70°C
	0826-1X4T-GH-F	4	1x4	Yes	Tab Up	Standard	10/100/1000 PoE+	-40 to 85°C
	1840576-1	4	1x4	Yes	Tab Down	Standard	10/100/1000 PoE+	0 to 70°C
	0879-2C2R-54	4	2x2	Yes	Stacked	Standard	10/100/1000	0 to 70°C
	1840868-1	4	2x2	Yes	Stacked	Standard	10/100/1000	0 to 70°C
	0879-2C4R-54	8	2x4	Yes	Stacked	Standard	10/100/1000	0 to 70°C
	0895-2C4R-GK	8	2x4	Yes	Stacked	Standard	10/100/1000 PoE+	-40 to 85°C
	1840660-1	8	2x4	Yes	Stacked	Standard	10/100/1000 PoE+	0 to 70°C
	0879-2C6R-54	12	2x6	Yes	Stacked	Standard	10/100/1000	0 to 70°C
	0895-2C6R-GK	12	2x6	Yes	Stacked	Standard	10/100/1000 PoE+	-40 to 85°C
	1-1840055-4	12	2x6	Yes	Stacked	Standard	10/100/1000	0 to 70°C
	1840949-1	12	2x6	Yes	Stacked	Standard	10/100/1000 PoE+	0 to 70°C
	0879-2C8R-54	16	2x8	Yes	Stacked	Standard	10/100/1000	0 to 70°C
	0895-2C8R-GK	16	2x8	Yes	Stacked	Standard	10/100/1000 PoE+	-40 to 85°C

## 2.5G PHYs

IC Part No.	Bel /TRP Part No.	No. Ports	Port Config.	LEDs	Port Orientation	Profile	Application	Operating Temp.
BCM5499	L836-121T-KD	1	1x1	Yes	Tab Down	Low Profile	2.5G	0 to 70°C
	L829-1J1T-JM	1	1x1	Yes	Tab Up	Low Profile	2.5G	0 to 70°C
	L8BJ-1K1T-KDE	1	1x1	Yes	Tab Down	Low Profile	2.5G	0 to 70°C
	0826-1X1T-HT-F	1	1x1	Yes	Tab Up	Standard	2.5G PoE+	-40 to 85°C
	0826-1X4T-HT-F	4	1x4	Yes	Tab Up	Standard	2.5G PoE+	-40 to 85°C
	2250150-1	1	1x1	Yes	Tab Up	Standard	2.5G PoE+	-40 to 85°C
	0854-2X4R-JD	8	2x4	No	Stacked	Standard	2.5G PoE+	-40 to 85°C
	0895-2B4J-JD	8	2x4	Yes	Stacked	Standard	2.5G PoE+	-40 to 85°C
	2250345-1	8	2x4	Yes	Stacked	Standard	2.5G PoE+	-40 to 85°C

## 5G PHYs

IC Part No.	Bel /TRP Part No.	No. Ports	Port Config.	LEDs	Port Orientation	Profile	Application	Operating Temp.
BCM5499	L836-121T-KE	1	1x1	Yes	Tab Down	Low Profile	5G	0 to 70°C
	0826-1X1T-JK-F	1	1x1	Yes	Tab Up	Standard	5G PoE+	-40 to 85°C
	2250477-1	1	1x1	Yes	Tab Up	Standard	5G PoE+	-40 to 85°C
	2250419-1	1	1x1	Yes	Tab Down	Low Profile	5G	0 to 70°C
	0854-2X4R-JVA	8	2x4	No	Stacked	Standard	5G PoE+	-40 to 85°C
	0895-2B4J-JVA	8	2x4	Yes	Stacked	Standard	5G PoE+	-40 to 85°C

## 10G PHYs

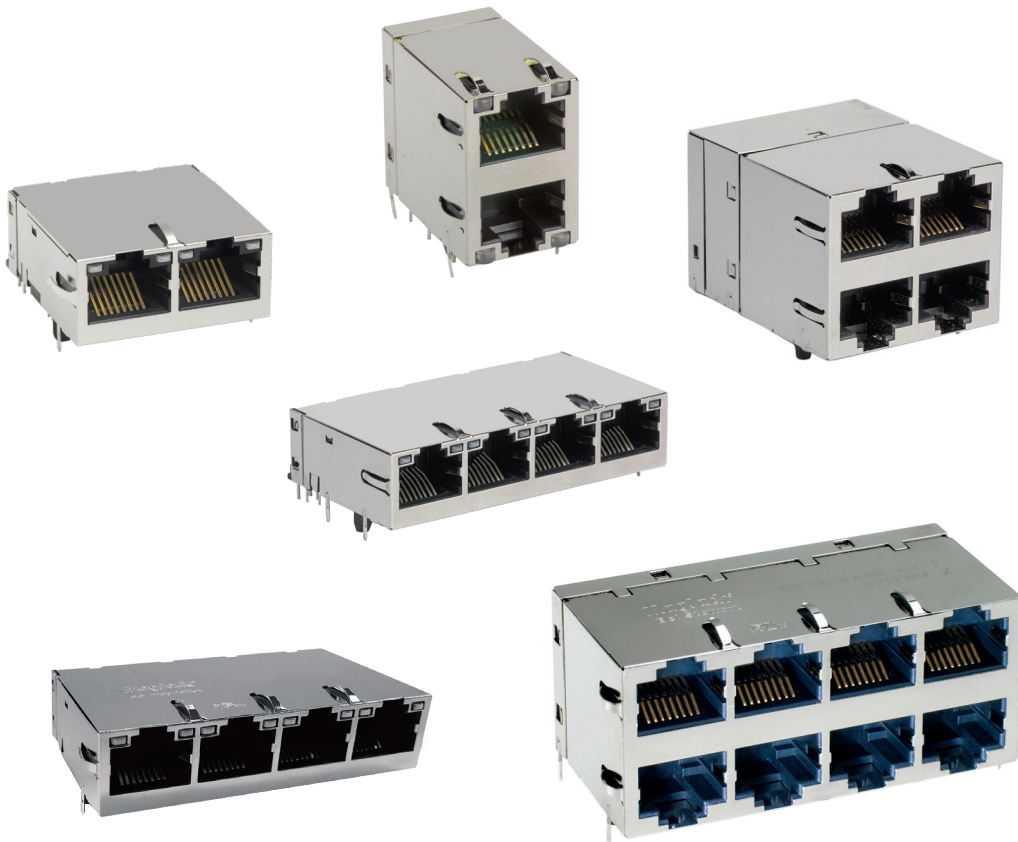
IC Part No.	Bel /TRP Part No.	No. Ports	Port Config.	LEDs	Port Orientation	Profile	Application	Operating Temp.
BCM8483	G10-1GHT-012E	1	1x1	Yes	Tab Down	Low Profile	10G	0 to 70°C
BCM8484	G15-111T-076C	1	1x1	Yes	Tab Down	Mid-plane	10G	0 to 70°C
BCM8485	G27-122T-066A	1	1x1	Yes	Tab Up	Standard	10G PoE+	0 to 70°C
BCM8488	G23-21YR-112	2	2x1	Yes	Stacked	Standard	10G	0 to 70°C
BCM8489	2250128-1	1	1x1	Yes	Tab Down	Low Profile	10G	0 to 70°C

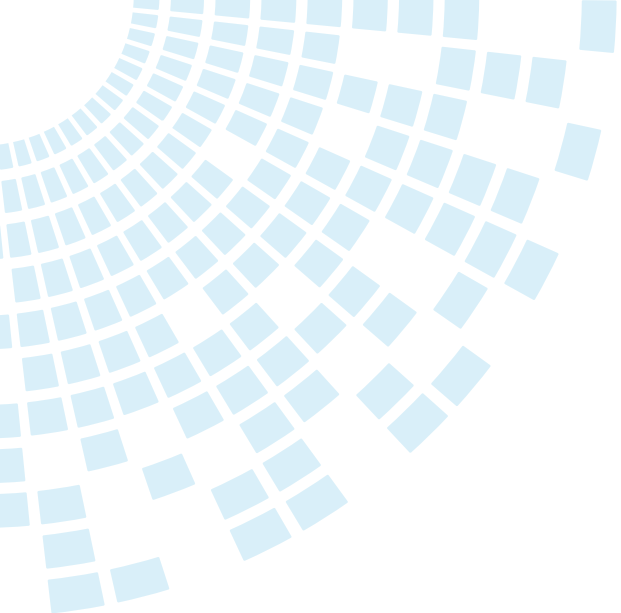
## Applications

- 10/100 AutoMDIX
- 10/100/1000 Gigabit
- Power over Ethernet (PoE) options
- Extended temperature range of -40°C to +85°C
- Multi-rate 2.5G, 5G and 10G

## Mechanical Options

- Plug tab down of plug tab up
- With or without LEDs (and bi-color)
- RJ45 and USB port combinations
- Low profile versions under 0.5in height
- Micro height versions under 0.45in height
- Mid-plane mount versions under 0.40in height
- Vertical mount packaging

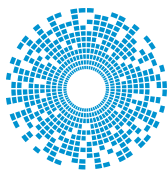




## About Bel

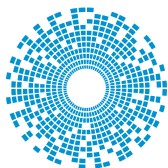
Bel ([www.belfuse.com](http://www.belfuse.com)) designs, manufactures and markets a broad array of products that power, protect and connect electronic circuits. These products are primarily used in the networking, telecommunications, computing, military and aerospace, transportation and broadcasting industries.

Bel's product groups include Magnetic Solutions (integrated connector modules, power transformers, power inductors and discrete components), Power Solutions and Protection (front-end, board-mount and industrial power products, module products and circuit protection), and Connectivity Solutions (expanded beam fiber optic, copper-based, RF and RJ connectors and cable assemblies). Bel operates facilities around the world.



**bel** MAGNETIC SOLUTIONS

a bel group



**trp** CONNECTOR

a bel group

**Bel Fuse Inc.**  
206 Van Vorst Street  
Jersey City, NJ 07302  
United States

+1 201-432-0463  
[techhelp@belf.com](mailto:techhelp@belf.com)

[belfuse.com](http://belfuse.com)