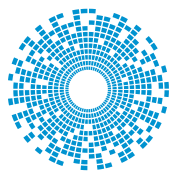


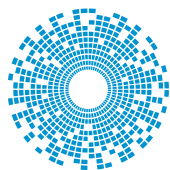


ICM Ethernet Product Selection Guide for MARVELL™ – Mass Market PHYs



bel MAGNETIC
SOLUTIONS

a bel group



trp CONNECTOR

a bel group



Disclaimer: Marvell owns the trademarked logo.

The MagJack® ICM brand encompasses a comprehensive portfolio of integrated devices that combine connectors and magnetics to provide the signal conditioning, EMI suppression and signal isolation previously performed by multiple (7+), discrete components. Each MagJack® ICM employed reduces PCB real estate use by more than 50% per RJ port.



10/100 FE MARVELL PHYs

IC Part No.	Bel /TRP Part No.	No. Ports	Port Config	LEDs	Port Orientation	Profile	Application	Operating Temperature
88E3016	08C2-1X1T-36	1	1x1	Yes	Tab Up	Standard	10/100 + 2USBA	-40 to 85°C
88E3019	08B0-1X1T-36-F	1	1x1	Yes	Tab Up	Standard	10/100	-40 to 85°C
88E3015	0826-1X1T-GJ-F	1	1x1	Yes	Tab Up	Standard	10/100 PoE+	-40 to 85°C
88E3061	SI-60001-F	1	1x1	Yes	Tab Down	Standard	10/100	0 to 70°C
88E3081/A	SI-60116-F	1	1x1	Yes	Tab Down	Standard	10/100	0 to 70°C
88E6021	SI-60116-F	1	1x1	Yes	Tab Down	Standard	10/100	0 to 70°C
88E6060	SI-50170-F	1	1x1	Yes	Tab Up	Standard	10/100	0 to 70°C
88E6063	SI-50170-F	1	1x1	Yes	Tab Up	Standard	10/100	0 to 70°C
88E6080	SI-46001-F	1	1x1	Yes	Vertical	Standard	10/100	0 to 70°C
88E6083	SI-46001-F	1	1x1	Yes	Vertical	Standard	10/100	0 to 70°C
88E3060	SI-16001-F	1	1x1	No	Vertical	Standard	10/100	0 to 70°C
88E3080	1840026-1	1	1x1	Yes	Tab Up	Standard	10/100 + 2USBA	0 to 70°C
88E3082	1840419-1	1	1x1	Yes	Vertical	Standard	10/100	0 to 70°C
88E3083	1840419-1	1	1x1	Yes	Vertical	Standard	10/100	0 to 70°C
88E6050	2250067-1	1	1x1	Yes	Tab Up	Standard	10/100	0 to 70°C
88E6051	0826-1X2T-GJ-F	2	1x2	Yes	Tab Up	Standard	10/100 PoE+	-40 to 85°C
88E6052	0826-1X2T-GJ-F	2	1x2	Yes	Tab Up	Standard	10/100 PoE+	-40 to 85°C
88E6020	0845-2D1T-H5	2	2x1	Yes	Stacked	Standard	10/100	0 to 70°C
88E6220	SI-60082-F	2	1x2	Yes	Tab Down	Standard	10/100	0 to 70°C
88E6070	SI-60065-F	4	1x4	Yes	Tab Down	Standard	10/100	0 to 70°C
88E6071	SI-60065-F	4	1x4	Yes	Tab Down	Standard	10/100	0 to 70°C
88E6250	SI-60128-F	4	1x4	No	Tab Down	Standard	10/100	0 to 70°C
88E6085	1-1840865-4	4	2x2	Yes	Stacked	Standard	10/100	0 to 70°C
88E6085/B	1-1840865-4	4	2x2	Yes	Stacked	Standard	10/100	0 to 70°C
88E6046*	1840049-5	8	2x4	Yes	Stacked	Standard	10/100	0 to 70°C
88E6240*	1840328-1	12	2x6	Yes	Stacked	Standard	10/100	0 to 70°C
88E6096*	1840328-1	12	2x6	Yes	Stacked	Standard	10/100	0 to 70°C
88E6097/F*	0833-2X6R-55-F	12	2x6	No	Stacked	Standard	10/100 PoE	0 to 70°C
88E6290*	833-2X6R-55-F	16	2x8	No	Stacked	Standard	10/100 PoE	0 to 70°C

10/100/1000 Single Port PHYs

IC Part No.	Bel /TRP Part No.	No. Ports	Port Config	LEDs	Port Orientation	Profile	Application	Operating Temperature
	0826-1X1T-43-F	1	1x1	Yes	Tab Up	Standard	10/100/1000	0 to 70°C
88E1000/S	0826-1X1T-32-F	1	1x1	Yes	Tab Up	Standard	10/100/1000	-40 to 85°C
88E1010/S	0826-1X1T-GH-F	1	1x1	Yes	Tab Up	Standard	10/100/1000 PoE+	-40 to 85°C
88E1011	0826-1X1T-GH-F	1	1x1	Yes	Tab Up	Standard	10/100/1000 PoE+	-40 to 85°C
88E1011S	V890-1AX1-A1	1	1x1	Yes	Vertical	Standard	10/100/1000	0 to 70°C
88E1114	V891-1XX1-A1	1	1x1	No	Vertical	Standard	10/100/1000	0 to 70°C
88E1115	L829-1J1T-43	1	1x1	Yes	Tab Up	Low Profile	10/100/1000	0 to 70°C
88E1116/R	L829-1J1T-43	1	1x1	Yes	Tab Up	Low Profile	10/100/1000	0 to 70°C
88E1118/R	L834-1C1T-S7	1	1x1	Yes	Tab Down	Low Profile	10/100/1000	0 to 70°C
88E1310	L835-1X1T-43	1	1x1	No	Tab Down	Low Profile	10/100/1000	0 to 70°C
88E1310S	L835-1X1T-43	1	1x1	No	Tab Down	Low Profile	10/100/1000	0 to 70°C
88E1318	L830-1J1T-43	1	1x1	Yes	Tab Down	Low Profile	10/100/1000	0 to 70°C
88E1318S	SI-61001-F	1	1x1	Yes	Tab Down	Standard	10/100/1000	0 to 70°C
88E1111	SI-61025-F	1	1x1	Yes	Tab Down	Standard	10/100/1000	-40 to 85°C
88E1112	SI-61025-F	1	1x1	Yes	Tab Down	Standard	10/100/1000	-40 to 85°C
88E1119R	1840417-1	1	1x1	Yes	Vertical	Standard	10/100/1000	0 to 70°C
88E1510	2250015-1	1	1x1	Yes	Tab Up	Standard	10/100/1000	-40 to 85°C
88E1518	2250015-1	1	1x1	Yes	Tab Up	Standard	10/100/1000	-40 to 85°C
88E1512	2250022-1	1	1x1	Yes	Tab Down	Standard	10/100/1000	0 to 70°C
88E1514	0821-1X1T-43-F	1	1x1	Yes	Tab Up	Standard	10/100/1000 + 1USBA	0 to 70°C
	1840029-1	1	1x1	Yes	Tab Up	Standard	10/100/1000 + 2USBA	0 to 70°C

10/100/1000 Multi Port PHYs

IC Part No.	Bel /TRP Part No.	No. Ports	Port Config	LEDs	Port Orientation	Profile	Application	Operating Temperature
88E1121/R	0826-1X2T-43-F	2	1x2	Yes	Tab Up	Standard	10/100/1000	0 to 70°C
	0826-1X2T-32-F	2	1x2	Yes	Tab Up	Standard	10/100/1000	-40 to 85°C
88E1020/S	0826-1X2T-GH-F	2	1x2	Yes	Tab Up	Standard	10/100/1000 PoE+	-40 to 85°C
88E1548	L886-1G2T-BF	2	1x2	Yes	Tab Up	Low Profile	10/100/1000	0 to 70°C
88E1545	1840638-1	2	1x2	Yes	Tab Up	Low Profile	10/100/1000	-40 to 85°C
88E1543	1840855-4	2	2x1	Yes	Stacked	Standard	10/100/1000	0 to 70°C
88E1340/S	0879-2C1R-V4	2	2x1	Yes	Stacked	Standard	10/100/1000	0 to 70°C
88E1322	0845-2R1T-E4	2	2x1	Yes	Stacked	Standard	10/100/1000	0 to 70°C
88E1240	0826-1X4T-43-F	4	1x4	Yes	Tab Up	Standard	10/100/1000	0 to 70°C
88E1149/R	0826-1X4T-GH-F	4	1x4	Yes	Tab Up	Standard	10/100/1000 PoE+	-40 to 85°C
88E1141	1840576-1	4	1x4	Yes	Tab Down	Standard	10/100/1000 PoE+	0 to 70°C
88E1145	0879-2C2R-54	4	2x2	Yes	Stacked	Standard	10/100/1000	0 to 70°C
88E1040	1840868-1	4	2x2	Yes	Stacked	Standard	10/100/1000	0 to 70°C
88E1041	0879-2C4R-54	8	2x4	Yes	Stacked	Standard	10/100/1000	0 to 70°C
88E1042H	0895-2C4R-GK	8	2x4	Yes	Stacked	Standard	10/100/1000 PoE+	-40 to 85°C
88E1680	1840660-1	8	2x4	Yes	Stacked	Standard	10/100/1000 PoE+	0 to 70°C
88E1685	0879-2C6R-54	12	2x6	Yes	Stacked	Standard	10/100/1000	0 to 70°C
88E6151	0895-2C6R-GK	12	2x6	Yes	Stacked	Standard	10/100/1000 PoE+	-40 to 85°C
88E6181	1-1840055-4	12	2x6	Yes	Stacked	Standard	10/100/1000	0 to 70°C
88E6183	1840949-1	12	2x6	Yes	Stacked	Standard	10/100/1000 PoE+	0 to 70°C
	0879-2C8R-54	16	2x8	Yes	Stacked	Standard	10/100/1000	0 to 70°C
	0895-2C8R-GK	16	2x8	Yes	Stacked	Standard	10/100/1000 PoE+	-40 to 85°C

2.5G PHYs

IC Part No.	Bel /TRP Part No.	No. Ports	Port Config	LEDs	Port Orientation	Profile	Application	Operating Temperature
88X2010	L836-121T-KD	1	1x1	Yes	Tab Down	Low Profile	2.5G	0 to 70°C
	L829-1J1T-JM	1	1x1	Yes	Tab Up	Low Profile	2.5G	0 to 70°C
88X2040(L)	L8BJ-1K1T-KDE	1	1x1	Yes	Tab Down	Low Profile	2.5G	0 to 70°C
88E2180	0826-1X1T-HT-F	1	1x1	Yes	Tab Up	Standard	2.5G PoE+	-40 to 85°C
88X3310	0826-1X4T-HT-F	4	1x4	Yes	Tab Up	Standard	2.5G PoE+	-40 to 85°C
88X3340	2250150-1	1	1x1	Yes	Tab Up	Standard	2.5G PoE+	-40 to 85°C
	0854-2X4R-JD	8	2x4	No	Stacked	Standard	2.5G PoE+	-40 to 85°C
	0895-2B4J-JD	8	2x4	Yes	Stacked	Standard	2.5G PoE+	-40 to 85°C
	2250345-1	8	2x4	Yes	Stacked	Standard	2.5G PoE+	-40 to 85°C

5G PHYs

IC Part No.	Bel /TRP Part No.	No. Ports	Port Config	LEDs	Port Orientation	Profile	Application	Operating Temperature
88X2010	L836-121T-KE	1	1x1	Yes	Tab Down	Low Profile	5G	0 to 70°C
88X2040(L)	0826-1X1T-JK-F	1	1x1	Yes	Tab Up	Standard	5G PoE+	-40 to 85°C
88E2180	2250477-1	1	1x1	Yes	Tab Up	Standard	5G PoE+	-40 to 85°C
88X3310	2250419-1	1	1x1	Yes	Tab Down	Low Profile	5G	0 to 70°C
88X3340	0854-2X4R-JVA	8	2x4	No	Stacked	Standard	5G PoE+	-40 to 85°C
	0895-2B4J-JVA	8	2x4	Yes	Stacked	Standard	5G PoE+	-40 to 85°C

10G PHYs

IC Part No.	Bel /TRP Part No.	No. Ports	Port Config	LEDs	Port Orientation	Profile	Application	Operating Temperature
88X3110	G10-1GHT-056	1	1x1	Yes	Tab Down	Low Profile	10G	-40 to 85°C
	2250337-1	1	1x1	Yes	Tab Down	Low Profile	10G	-40 to 85°C
88X3120	G27-122T-015	1	1x1	Yes	Tab Up	Standard	10G PoE+	-40 to 85°C
88X3140	2250368-1	1	1x1	Yes	Tab Up	Standard	10G PoE+	-40 to 85°C
88X3220	G23-21YR-010	2	2x1	Yes	Stacked	Standard	10G	-40 to 85°C
88X3240	G18-28NV-010	2	2x1	Yes	Stacked	Standard	10G	-40 to 85°C
88X3310	G18-48NV-010	4	2x2	No	Stacked	Standard	10G	-40 to 85°C
88X3340	G31-48NV-011	4	2x2	Yes	Stacked	Standard	10G PoE+	-40 to 85°C
	G14-88NV-010	8	2x4	Yes	Stacked	Standard	10G	-40 to 85°C
	G28-88NV-011	8	2x4	Yes	Stacked	Standard	10G PoE+	-40 to 85°C

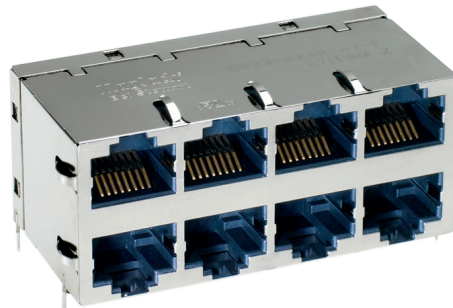
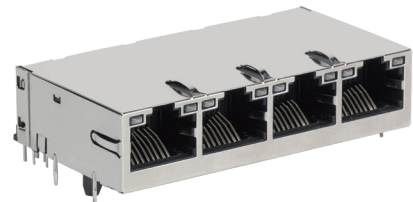
Applications

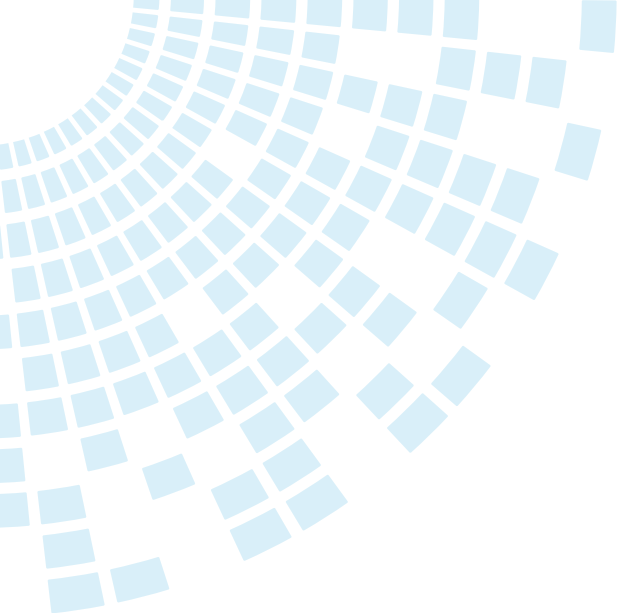
- 10/100 AutoMDIX
- 10/100/1000 Gigabit
- Power over Ethernet (PoE) options
- Extended temperature range of -40°C to +85°C
- Multi-rate 2.5G, 5G, 10G



Mechanical Options

- Plug tab down or plug tab up
- With or without LEDs (and bi-color)
- RJ45 and USB port combinations
- Low profile versions under 0.5in height
- Micro height versions under 0.45in height
- Mid-plane mount versions under 0.40in height
- Vertical mount packaging

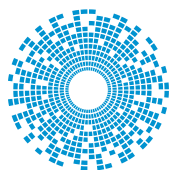
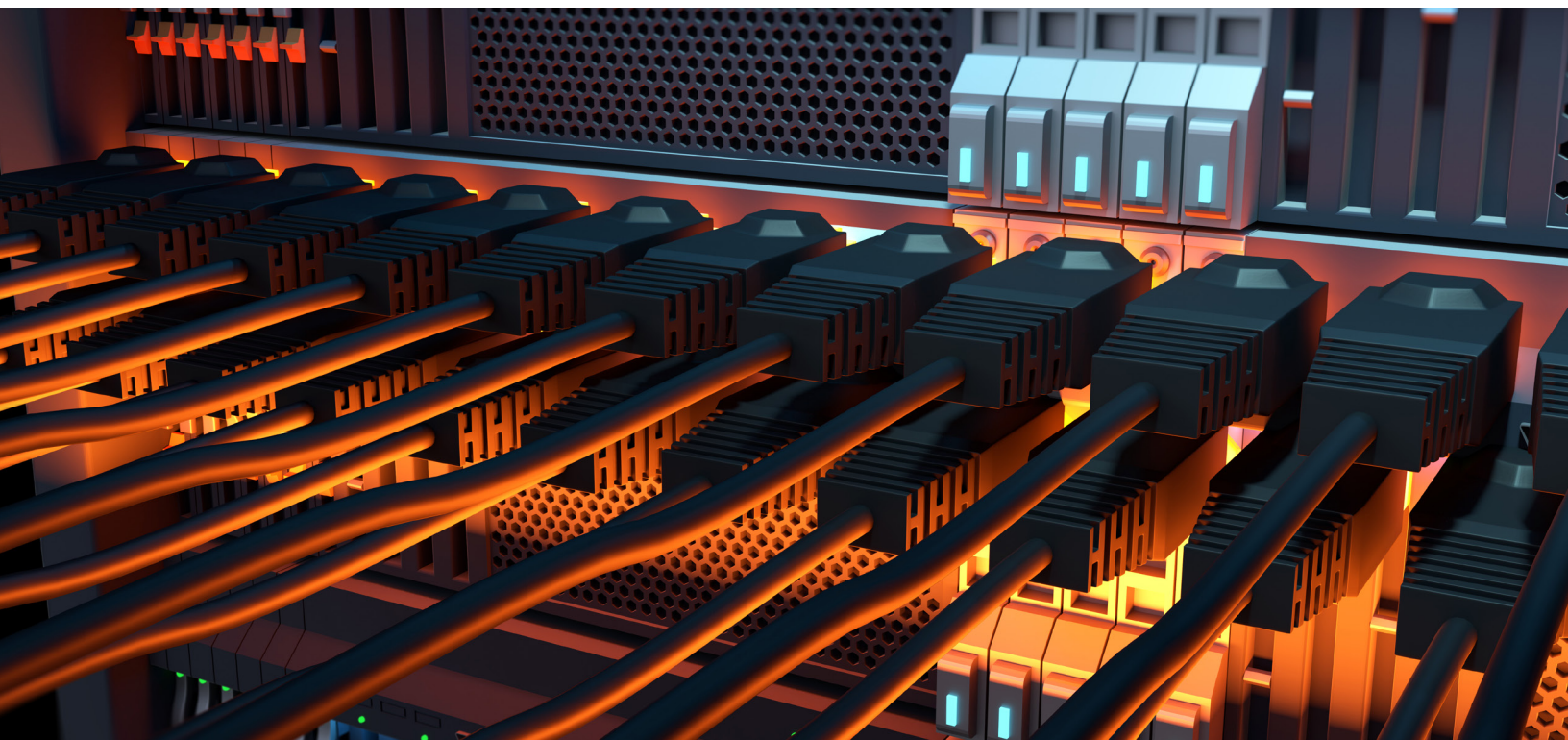




About Bel

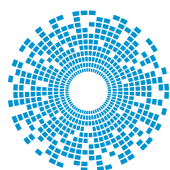
Bel (www.belfuse.com) designs, manufactures and markets a broad array of products that power, protect and connect electronic circuits. These products are primarily used in the networking, telecommunications, computing, military and aerospace, transportation and broadcasting industries.

Bel's product groups include Magnetic Solutions (integrated connector modules, power transformers, power inductors and discrete components), Power Solutions and Protection (front-end, board-mount and industrial power products, module products and circuit protection) and Connectivity Solutions (expanded beam fiber optic, copper-based, RF and RJ connectors and cable assemblies). Bel operates facilities around the world.



bel MAGNETIC
SOLUTIONS

a bel group



trp CONNECTOR

a bel group

Bel Fuse Inc.

206 Van Vorst Street
Jersey City, NJ 07302
United States

+1 201-432-0463
techhelp@belf.com

belfuse.com